

Can do.

Buy-to-Let

Product & Criteria Guide

UPDATED: 19.09.24

INTERMEDIARY USE ONLY

0333 414 1495

sales@lendco.co.uk





Standard Properties - 2 Year Products

3M SONIA 4.88% as of 1st of September 2024

Key Information

Min loan £100,000**ERCs** 2%/2%**Stress Rate
(Capital Raising)** Payrate + 1.5%**Stress Rate
(£4£)** Payrate + 1%**Reversion Rate** 3M SONIA + 4.79%

Product Type	Max LTV	Initial Rate	Arrangement Fee	Loan Size
2 Year Fixed	65%	4.09%	5.00%	£2m to £3m
	65%	5.09%	3.00%	£2m to £3m
	65%	5.59%	2.00%	£2m to £3m
	75%	3.89%	5.00%	Up to £500k
	75%	4.89%	3.00%	Up to £500k
	75%	5.39%	2.00%	Up to £500k
	75%	3.99%	5.00%	£500k to £1.5m
	75%	4.99%	3.00%	£500k to £1.5m
	75%	5.49%	2.00%	£500k to £1.5m
	75%	4.09%	5.00%	£1.5m to £2m
	75%	5.09%	3.00%	£1.5m to £2m
	75%	5.59%	2.00%	£1.5m to £2m

Ex-Pat Rates + 0.25%

No restrictions on country of residence or currency

Foreign National Rates + 0.50%

Non-UK residents 65% max LTV. Min loan £350,000



Standard Properties - 5 Year Products

3M SONIA 4.88% as of 1st of September 2024

Key Information

Min loan £100,000**ERCs** 5%/4%/3%/2%/2%**Stress Rate** Payrate**Reversion Rate** 3M SONIA + 4.79%

Product Type	Max LTV	Initial Rate	Arrangement Fee	Loan Size
5 Year Fixed	65%	5.39%	5.00%	£4m to £5m
	65%	5.79%	3.00%	£4m to £5m
	65%	5.99%	2.00%	£4m to £5m
	75%	4.79%	5.00%	Up to £500k
	75%	5.19%	3.00%	Up to £500k
	75%	5.39%	2.00%	Up to £500k
	75%	4.89%	5.00%	£500k to £1.5m
	75%	5.29%	3.00%	£500k to £1.5m
	75%	5.49%	2.00%	£500k to £1.5m
	75%	5.19%	5.00%	£1.5m to £4m
	75%	5.59%	3.00%	£1.5m to £4m
	75%	5.79%	2.00%	£1.5m to £4m

Ex-Pat Rates + 0.25%

No restrictions on country of residence or currency

Foreign National Rates + 0.50%

Non-UK residents 65% max LTV. Min loan £350,000

HMO and MUFB - 2 Year Products

3M SONIA 4.88% as of 1st of September 2024

Key Information

Min loan	£100,000
ERCs	2%/2%
Stress Rate (Capital Raising)	Payrate + 1.5%
Stress Rate (£4£)	Payrate + 1%

Reversion Rate 3M SONIA + 4.79%

Product Type	Max LTV	Initial Rate	Arrangement Fee	Loan Size
2 Year Fixed	65%	4.29%	5.00%	£2m to £3m
	65%	5.29%	3.00%	£2m to £3m
	65%	5.79%	2.00%	£2m to £3m
	75%	3.99%	5.00%	Up to £500k
	75%	4.99%	3.00%	Up to £500k
	75%	5.49%	2.00%	Up to £500k
	75%	4.19%	5.00%	£500k to £1.5m
	75%	5.19%	3.00%	£500k to £1.5m
	75%	5.69%	2.00%	£500k to £1.5m
	75%	4.29%	5.00%	£1.5m to £2m
	75%	5.29%	3.00%	£1.5m to £2m
	75%	5.79%	2.00%	£1.5m to £2m

HMO and MUFB - 5 Year Products

3M SONIA 4.88% as of 1st of September 2024

Key Information

Min loan £100,000

ERCs 5%/4%/3%/2%/2%

Stress Rate Payrate

Reversion Rate 3M SONIA + 4.79%

Product Type	Max LTV	Initial Rate	Arrangement Fee	Loan Size
5 Year Fixed	65%	5.49%	5.00%	£4m to £5m
	65%	5.89%	3.00%	£4m to £5m
	65%	6.09%	2.00%	£4m to £5m
	70%	5.49%	5.00%	£2m to £4m
	70%	5.89%	3.00%	£2m to £4m
	70%	6.09%	2.00%	£2m to £4m
	75%	4.89%	5.00%	Up to £500k
	75%	5.29%	3.00%	Up to £500k
	75%	5.49%	2.00%	Up to £500k
	75%	5.09%	5.00%	£500k to £1.5m
	75%	5.49%	3.00%	£500k to £1.5m
	75%	5.69%	2.00%	£500k to £1.5m
	75%	5.29%	5.00%	£1.5m to £2m
	75%	5.69%	3.00%	£1.5m to £2m
	75%	5.89%	2.00%	£1.5m to £2m

Ex-Pat Rates + 0.25%

No restrictions on country of residence or currency

Foreign National Rates + 0.50%

Non-UK residents 65% max LTV. Min loan £350,000

Holiday Lets

3M SONIA 4.88% as of 1st of September 2024

Key Information

Min loan	£100,000
Stress Rate	Payrate
ERCs	5%/4%/3%/2%/2%

Reversion Rate 3M SONIA + 4.79%

Product Type	Max LTV	Initial Rate	Arrangement Fee	Loan Size
5 Year Fixed	75%	5.75%	5.00%	Up to £3M
	75%	6.25%	2.50%	Up to £3M



Product Transfers

Product Transfer Process



O1



Enter the original case number in our online portal.

O2



Duplicate the application and select the desired product from our Transfer Range.

O3



If you do not know the original application number, you can start a new application and select "Product Transfer" from the drop down.

O4



Process your Transfer up to 8 weeks prior to rate expiry for a seamless switch when the existing rate expires.

All Product Transfer rates are the same as New Business rates across all asset and borrower types.

Capital Raising

- ✓ **Full proc fee**
- ✓ Physical valuation required
- ✓ 2-year products stressed at **payrate + 1.5%**
- ✓ 5-year products stressed at **payrate**

Pound-For-Pound

- ✓ **Full proc fee**
- ✓ **No physical** valuation required
- ✓ 2-year products stressed at **payrate + 1%**
- ✓ 5-year products stressed at **payrate**



Bridge Exits

Bridge Exit products
are the same as
New Business
products with:



0.1%
reduction
on rate



FULL
proc fee





Valuations

You can instruct valuations on our behalf as VAS manage the instruction process, meaning you can instruct asset valuations at any point in the process and at a time that is convenient to you, your borrower and the transaction in hand.

If you are already registered with VAS Panel for other lenders, you do not need to do anything – simply instruct when you are ready to do so.

Asset	Fee
Single asset and HMO properties (6 beds max) of up to £2M in value	VAS fee scale on a short-form basis
All MUFBs and assets greater than £2M in value and HMOs with more than 6 beds	VAS will quote on a long-form basis

Application fees: £150 per application. Upon submission we will send you an email with details of how to pay this application fee.

If you are not registered with VAS:

STEP 01

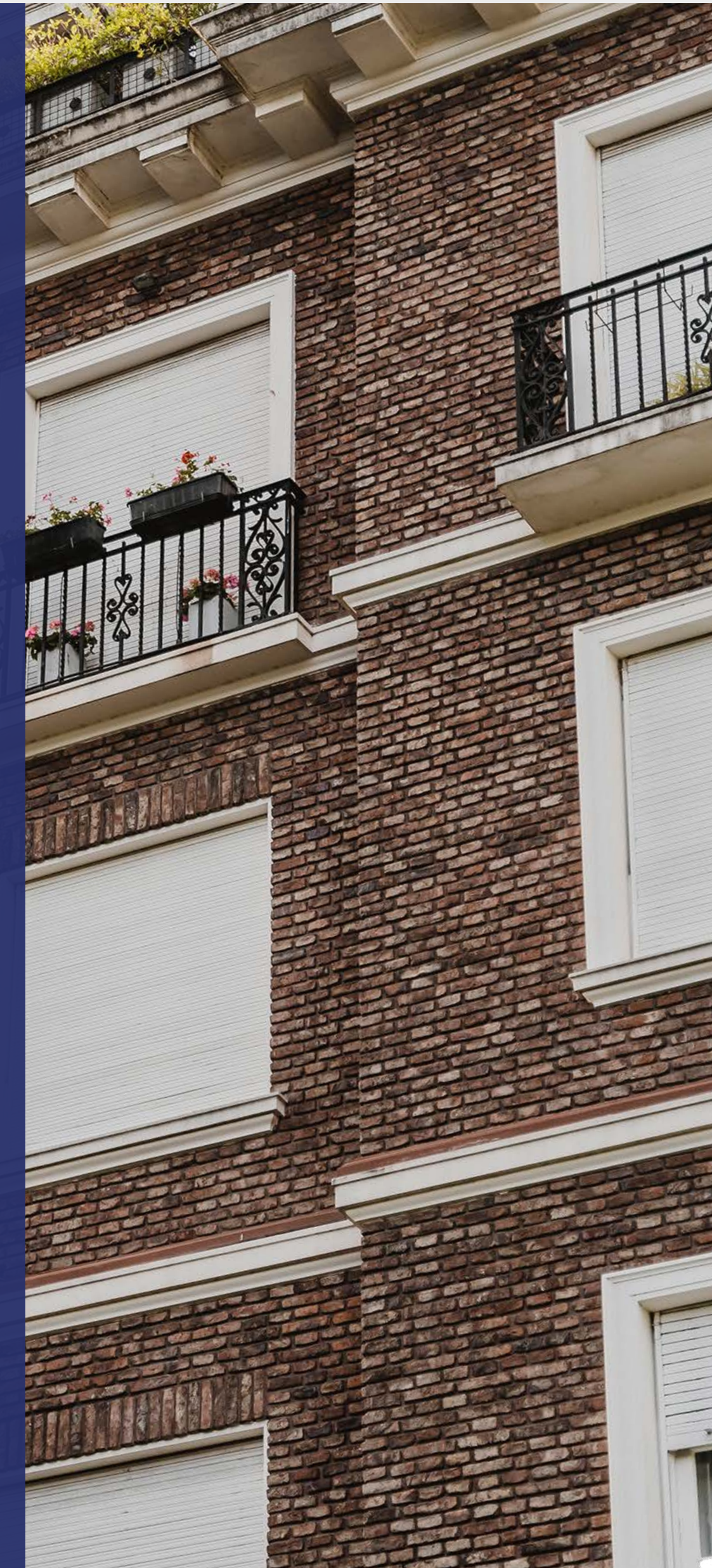
Register

You can do so by emailing VASProgress@vas-group.co.uk

STEP 02

Instruct

You can instruct whenever you are ready





Applicants

We look at transactions with a “can do” mentality, and underwrite each case manually on its own merits. As such, a strong background portfolio can be used to support applications where necessary.

Acceptable Borrowers

- ✓ Individuals
- ✓ LTD companies including SPVs and LLPs
- ✓ We can lend to trusts (at the underwriter's discretion £500,000 minimum loan)
- ✓ UK, Channel Islands and Isle of Man registered entities
- ✓ We can lend to first time landlords, as long as they are not also a first-time buyer
- ✓ Resident and non-resident Ex-Pats and Foreign Nationals

Ex-Pats and Foreign Nationals

- ✓ Ex-Pats maximum loan £2m at 75% LTV
- ✓ Ex-Pats and Foreign Nationals maximum loan £2.5m at 65% LTV
- ✓ An established financial history in the UK is a must for us
- ✓ Borrowers should be employed by a traceable company and have a minimum income of £75k
- ✓ Acceptable Nationalities: UK / EU plus: Australia, Canada, China, Hong Kong, Iceland, India, Japan, Malaysia, New Zealand, Norway, Singapore, South Africa, South Korea, Switzerland and USA



Ex-Pats and Foreign Nationals



Borrowers up to **6 per application**



Maximum Loan Size
£5m per asset
£10m per borrower



Min age 25
Max age 80*

Please do get in touch if you are unsure about any of the criteria.

*At least one borrower to be over the age of 25 at the time of application, or at least one applicant to be under the age of 80 at the time of application.



Property Criteria

Acceptable Properties

- ✓ Residential property in England and Wales
- ✓ £10m single unit maximum property value
- ✓ Freehold houses up to 8 bedrooms
- ✓ HMOs up to 20 bedrooms
- ✓ Leasehold flats
- ✓ Multi-unit Freehold or Leasehold blocks*
- ✓ New build flats or houses
- ✓ Ex-Local Authority
- ✓ Residential property above commercial

Applicable ICR

- ✓ For purchases and remortgages
- ✓ Individuals: 125% - 145%
- ✓ Limited Companies & LLPs: 125%
- ✓ HMOs (up to 6 bedrooms): 125% - 145%
- ✓ HMOs (7-20 bedrooms): 135% - 145%
- ✓ PD: 160%

Unacceptable situations

- ✗ Politically exposed foreign nationals
- ✗ Imprisoned borrowers
- ✗ Borrowers with diplomatic immunity
- ✗ Foreign embassy staff
- ✗ Standard BTL properties with more than 8 bedrooms
- ✗ Diplomatic Agents
- ✗ Live-work units
- ✗ Flats above public houses, bars or nightclubs
- ✗ Grade 1 listed properties
- ✗ Properties with more than 3 acres of land
- ✗ Retirement or sheltered accommodation
- ✗ Properties where the 90-day value is lower than 80% of its open market value as indicated by valuer

* Min 60 years unexpired at end of term. No onerous or escalating ground rent/service charges.

✓
HMOs up to **20 bedrooms**

✓
No upper limit on the number of **MUFB units**

✓
No limit on portfolio size

✓
We accept New Builds and Holiday Lets





Talk to us

There's no better way to understand our criteria and processes than building a relationship with our sales team. They can provide an expert assessment of any case and make decisions quickly.

Please don't hesitate to get in touch if you would like to discuss an enquiry, or any of the criteria in this guide.



James Doggett

jdoggett@lendco.co.uk

07591 342675



Ben Pike

bpike@lendco.co.uk

07519 328426



James Phillips

jphillips@lendco.co.uk

07519 328425



Alex King

aking@lendco.co.uk

07968 553317





Can do.

Talk to our sales team today

0333 414 1495

sales@lendco.co.uk

Information correct at time of publication, for further information or to discuss a specific enquiry please contact us. Lendco Limited is a company registered in England & Wales with company registration number 11177105. Our registered office is at: 33 Gracechurch Street, London, EC3V 0BT

